

Springfield Community Business Center Commuter Parking Garage Slugging Community Meeting

November 20, 2019



Department of Transportation

Building Design and Construction Division



Introduction

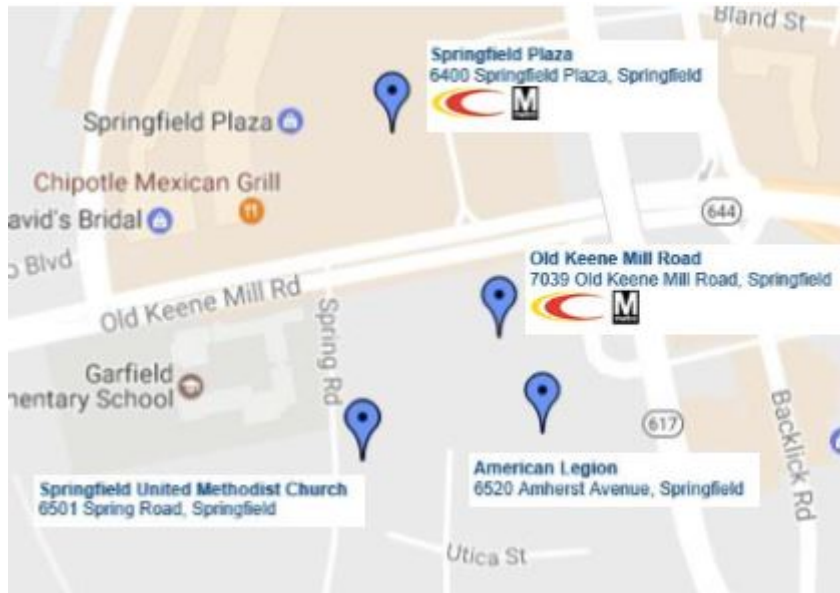
Welcome

- Introduction
- Project Overview
 - Scope
 - Status
- Slug Line and Parking Relocation Plan During Construction
- Questions and Answers

Springfield Community Business Center Commuter Parking Garage Site Location



Background – Existing Parking Locations



- Existing County-owned surface parking (278 spaces)
- Springfield Plaza (240 spaces leased)
- American Legion (100 spaces leased)
- Springfield United Methodist Church (54 spaces leased)
- **672 total spaces with 394* being leased**

** County to continue leasing these spaces after the garage opens as long as there is sufficient demand and owner willingness*

Project Overview

- **Design Features**

- 6-level garage with over 1000 parking spaces
 - Adding over 700 County-owned spaces at the lot
- Two commuter slug line loading zones
 - Line A: 18-car loading zone with extra 4-car queueing capacity
 - Line B: 15-car loading zone with extra 4-car queueing capacity
- Shared slug lines and kiss-and-ride space
- Carpool waiting/short-term parking area provided on ramp
 - 10 spaces initially
 - Can be expanded

Project Overview

- **Design Features**

- Pedestrian bridge over Old Keene Mill Road
 - Provides access to bus stops on westbound Old Keene Mill Road
 - Connects Springfield Plaza to the parking garage
- Bus transit center with 7 bus bays
- Bicycle storage, passenger waiting areas, and transit system information
- Community event spaces on ground and top levels

Aerial Perspective



AERIAL VIEW FROM NORTHWEST

Aerial Perspective



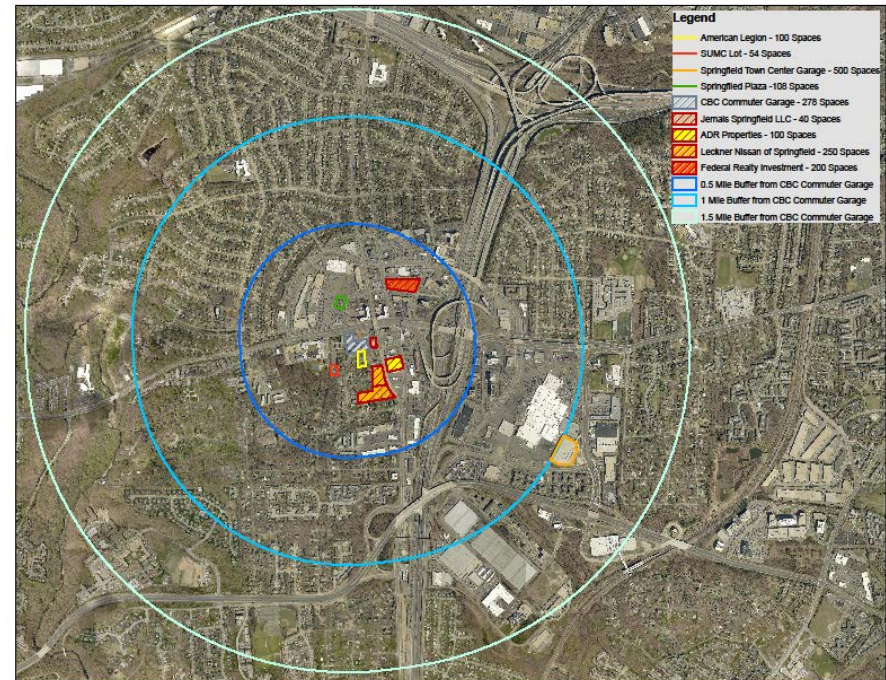
Project Status

- **Status**
 - Design plans completed
 - Land acquisition completed
 - Construction anticipated to begin in Spring 2020
 - Two slug lines will be relocated to two temporary locations **one month** before construction
 - Slugging community will be notified **two months** before construction
 - Garage operation anticipated to begin in Fall 2022

Temporary Slug Line and Parking Relocation

- **Temporary Slug Line and Parking Relocation**

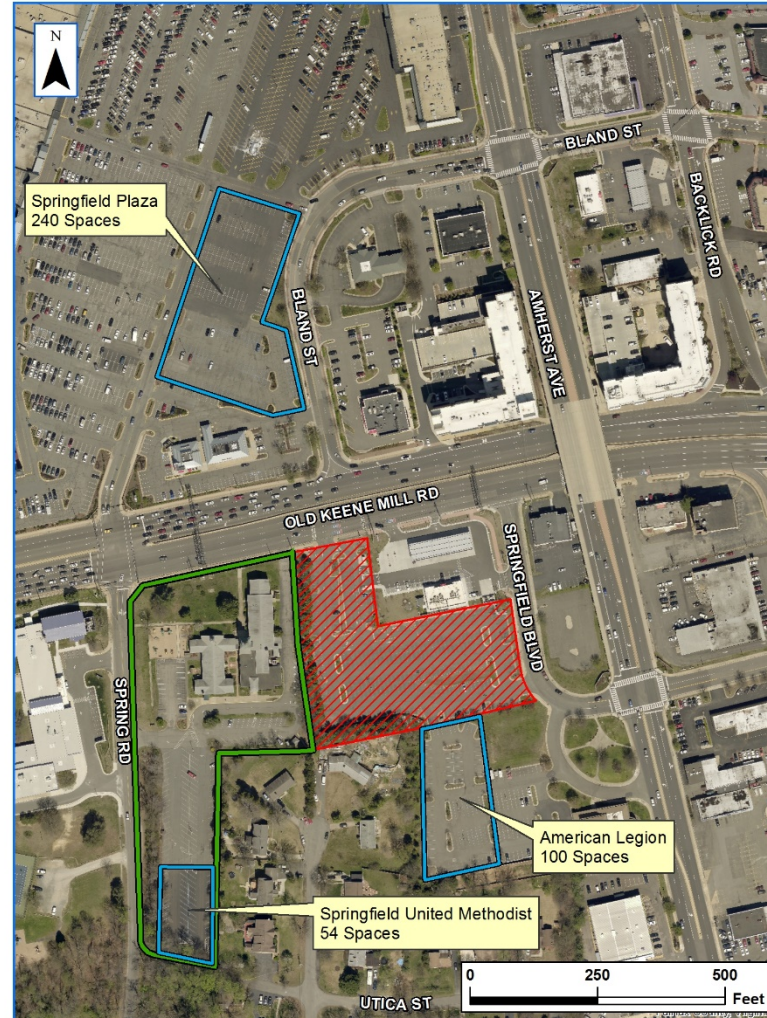
- Existing lot will be closed during construction
- County will provide alternate locations
 - 18th to 23rd, Foggy Bottom Line relocates to Springfield United Methodist Church
 - 14th, L'Enfant, Navy Yard, Union Station Line relocates to Springfield Town Center Garage



Temporary Slug Line and Parking Relocation

Temporary slug line at Springfield United Methodist Church

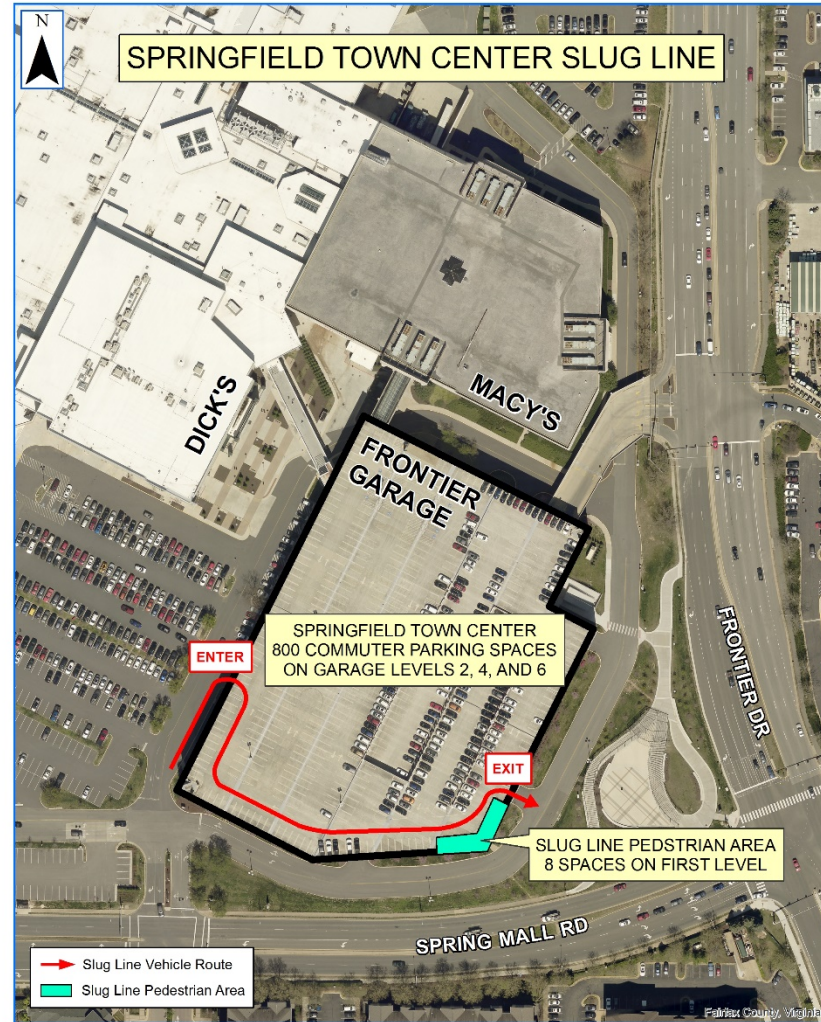
- Springfield United Methodist Church (54 spaces leased)
- American Legion (Nearby, 100 spaces leased)
- Springfield Plaza (Across Old Keene Mill Rd, 240 spaces leased)
- **394 total spaces being leased**



Temporary Slug Line and Parking Relocation

Springfield Town Center Garage

- Total 800 spaces leased on Garage Levels 2, 4, and 6
 - 500 existing leased spaces
 - 300 new leased spaces for temporary relocation
- Slugging area on Level 1



Temporary Slug Line and Parking Relocation

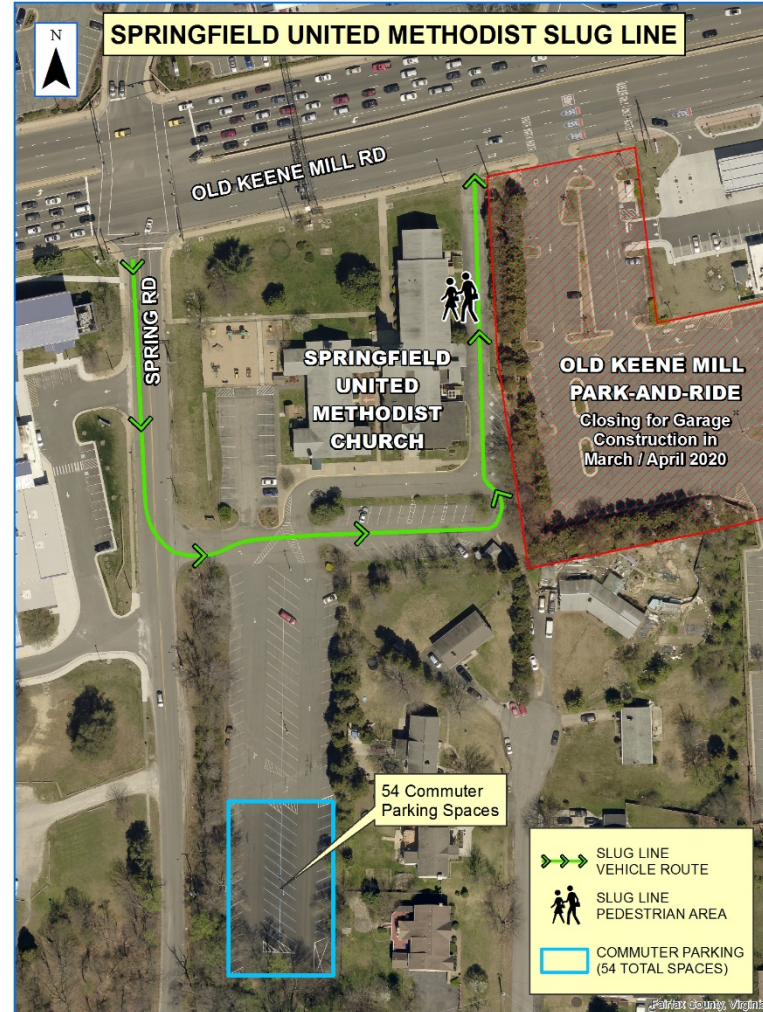
14th, L'Enfant, Navy Yard, Union Station Line goes to Springfield Town Center Garage

- The 14th line is the largest line with 400+ sluggers;
- The Town Center Garage has more spaces (800) than the Church/Plaza/American Legion (394) ;
- Decrease chances of illegal parking issues at Church/Plaza/American Legion ;
- Provide more queueing spaces;
- Weather protected slugging area inside garage;
- Close to Springfield Metro Station in 11 minutes walk (0.6 miles).

Temporary Slug Line and Parking Relocation

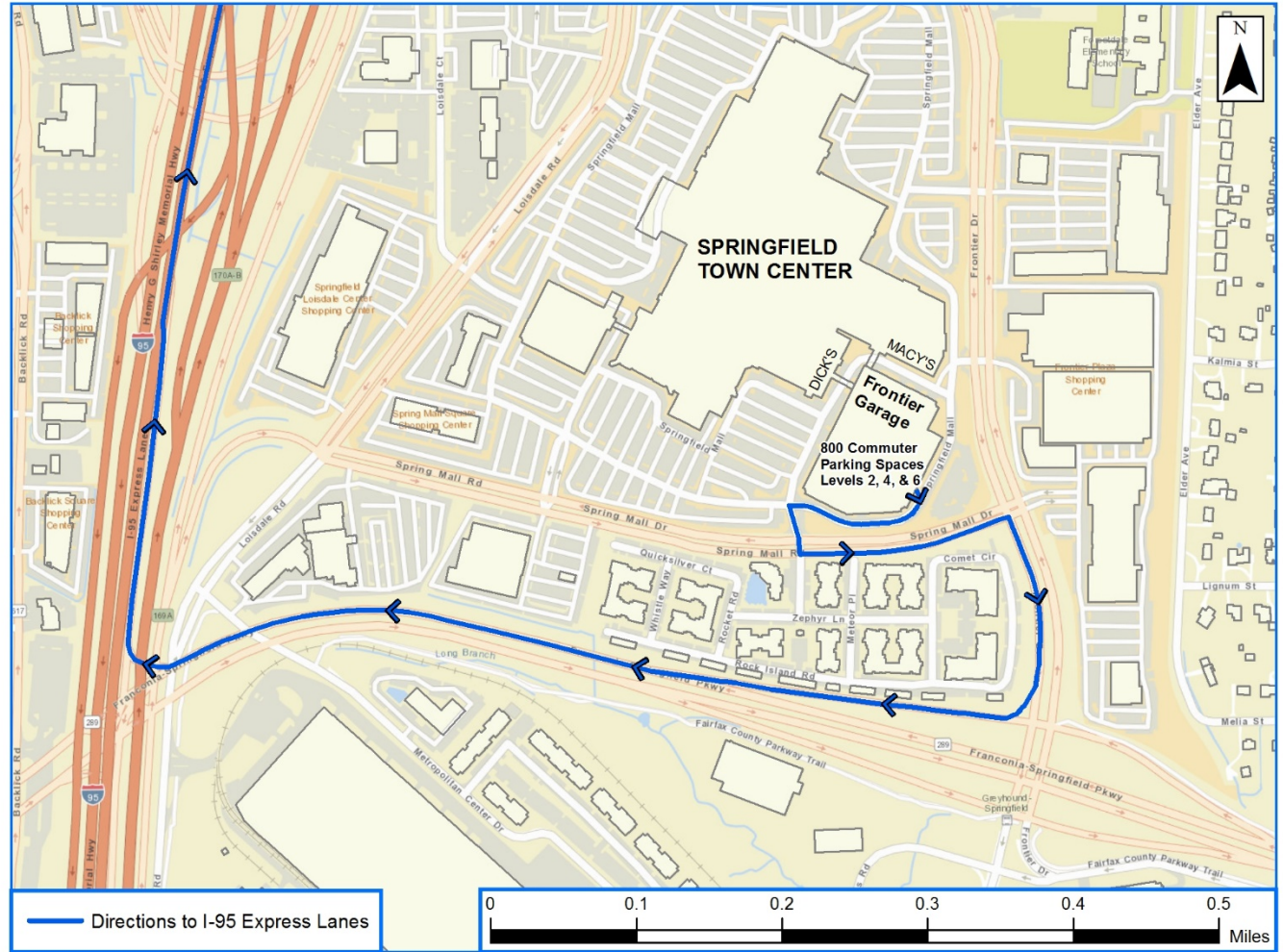
18th to 23rd, Foggy Bottom Line goes to Springfield United Methodist Church

- Temporary slug line as shown by the vehicle route
- Just to the west of the current slug line at Bob's Old Keene Mill Park-and-Ride
- Keep using the existing leased spaces (394 total spaces)



Temporary Slug Line and Parking Relocation

Springfield
Town
Center
Garage
Slug Line
Direction
to I-95
Express
Lane



Thank You

Comments



- Mail in Comment Forms postmarked or
 - Submit Comments on Project Website by **December 20, 2019**
- <https://www.fairfaxcounty.gov/transportation/projects/springfield-garage>

Department of Transportation

www.fairfaxcounty.gov/fcdot (703) 877-5600 TTY: 711

Department of Public Works and Environmental Services

www.fairfaxcounty.gov/dpwes (703) 324-5800 TTY: 711

Questions and Answers

Questions and Answers

